



# Installation Instructions

## AQ-4000 Countertop Water Filter

White, Black, and Brushed Steel finishes

Welcome to the AquaSana experience. You are about to enjoy clean, clear water and the peace of mind that comes from knowing award-winning filter technology is working for you.

# Contents



Filter unit with snap-on cover



Threaded cartridge caps (A & B) and “O” rings pre-installed in filter unit



Filter cartridges (A & B) pre-installed in filter unit (Model no. AQ-4035)



Faucet diverter valve and hose assembly  
(1 included, either Standard or Premium)



Brass faucet adapters (2 sizes), rubber washers\* and install tool  
(not included in or covered by the system certification)

## Stop! Does your faucet have a pullout sprayer?

Unfortunately, Aquasana drinking water filters do not fit on these faucets. In order to have filtered water in your home, please consider our Under Counter filter with a faucet that matches your decor!



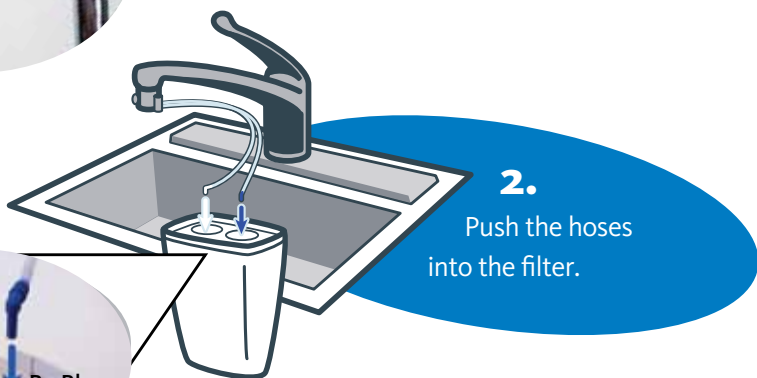
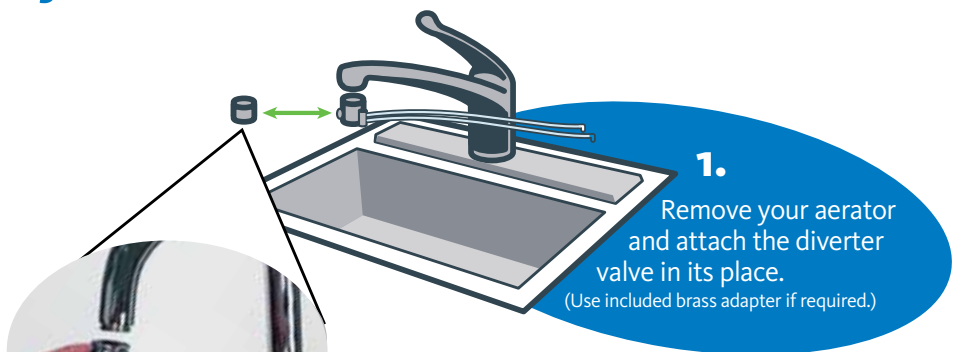


**The AQ-4000 is available in three finishes with two diverter valve styles**  
(Premium style diverter shown in front)



AQ-4000 in white finish with standard diverter valve shown

# Easy to install



# Operating

Your filter comes pre-assembled with cartridges you won't need to change for six months, or 500 gallons.



Turn on **cold** water.

Pull pin on diverter valve for clean water. Turn water off when done. If pull pin does not retract, push pin in once water is off.

(Standard diverter shown. For Premium diverter models, press paddle in to turn on, pull out for off.)



You should anticipate a residual flow of water each time you use the filter, as the system is vented and designed to clear the line.



AQ-4000 Premium Filter in brushed steel finish shown

## “Pure Satisfaction”

All Aquasana products offer a 90-day 100% satisfaction guarantee. (A 1-year warranty is included, which covers defects in materials and workmanship.) If for any reason you are not satisfied with your purchase, simply call us, or the dealer you purchased from, for a Return Authorization Code and a full refund will be promptly issued upon return. Thank you for choosing Aquasana!

## Important:

For the first 72 hours, the faucet diverter valve will drip intermittently, until the filters become fully saturated. Once they are saturated you should anticipate a residual flow of water each time you use the filter, as the system is vented and designed to clear the line.

## Precautions:

Aquasana is not liable for consequential or incidental damages due to improper installation.

- **Filter is only to be used with cold water.**
- Never use this system on constant-pressure applications such as ice makers or drinking fountains.
- If the faucet diverter valve does not fit, you will need to install one of the brass faucet adapters before attaching it. The brass faucet adapters can be tightened using the install tool. (If the supplied brass faucet adapters do not fit you can obtain the right size from your local hardware store. Be sure to bring your aerator and diverter valve to find the perfect match.)
- Make sure the rubber washer is in place inside the chrome swivel collar on the diverter valve.
- If you experience a leak at the hose connection, disconnect and re-seat the hose.
- \* Supplied brass faucet adapters and seals are not included in or covered by the system certification.

Model: AQ-4000

Replacement cartridge: AQ-4035

Rated service flow, 0.4 gpm

Max working pressure: 80 psi

Max operating temperature: 90° F

Max capacity: 500 gal

Do not use with water that is microbiologically unsafe or of unknown water quality without adequate disinfection before or after the system. Systems certified for cyst reduction may be used on disinfected waters that may contain filterable cysts.

## Don't Void Your Warranty:

This filter system is designed and tested for use with genuine Aquasana parts including replacement filters and all hardware (diverter valve). Use of parts from other manufacturers may result in loss of contaminant reduction performance, system damage or failure. Use of parts from other manufacturers will also void your warranty. Please visit [Aquasana.com](http://Aquasana.com) for all replacement parts.



**Aquasana, Inc.** | [www.aquasana.com](http://www.aquasana.com)  
6310 Midway Road | Haltom City, Texas 76117  
USA 866.662.6885 | Canada 877.332.7873

**For exclusive deals**

 [facebook.com/aquasana](https://facebook.com/aquasana)  
 [twitter.com/aquasana](https://twitter.com/aquasana)